



8 Beechtree Circuit, PORT MACQUARIE



Elevated Gem, Swimming Pool & A Patio With Opening And Closing Roof.

With an attractive street presence enhanced by being in an elevated position, living here on the high side of the street you'll catch the sea breezes and enjoy a pleasant outlook over the surrounding landscape.

Featuring two homely living areas with rising ambient ceiling, an appealing kitchen with stone benchtop and family area overlooking an attractive back garden.

Enjoyment of the outdoors is superbly catered for here with inground swimming pool and a BBQ pavilion. An extensive patio stretches the width of the home, enhanced with an impressive feature of having an opening and closing patio roof which operates automatically with the flick of a switch, so regardless of the season or prevailing weather this space is the place to relax.

There are no neighbours living behind you with the opportunity to access the bac

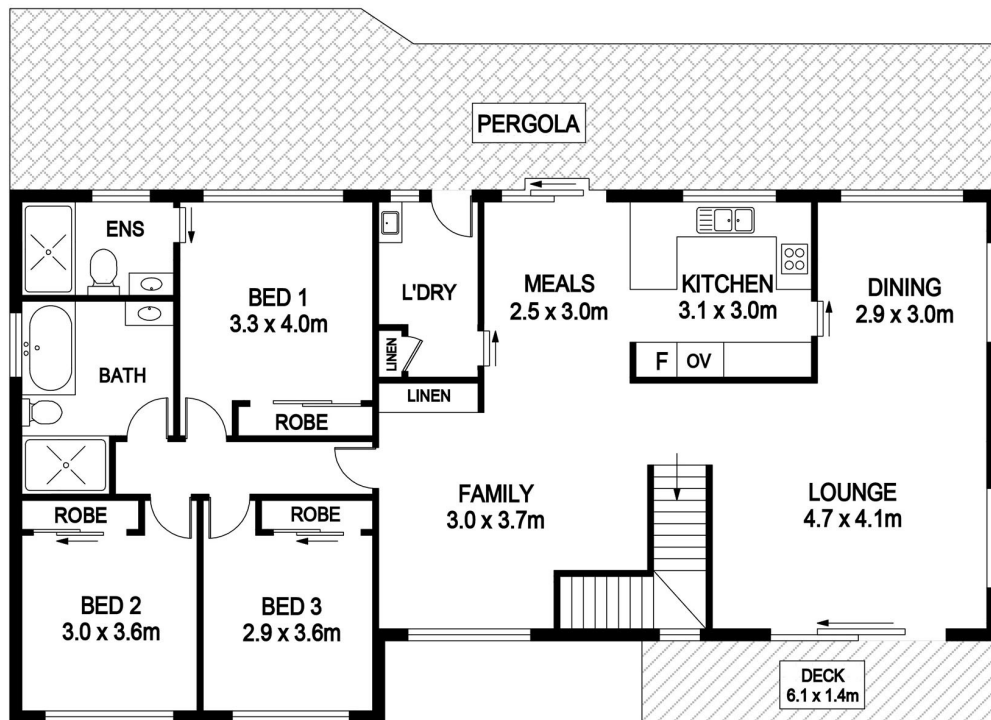
\$585,000

Type: House
Sold Date: 27/11/2018
Land: 710 m2

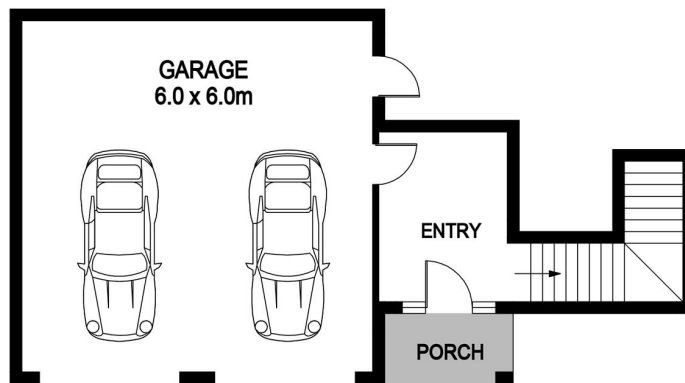
gregtrembath
REAL ESTATE

Greg Trembath

0412 001 944



UPPER FLOOR



GROUND FLOOR

8 Beechtree Cct, Port Macquarie

DISCLAIMER

PLANS SHOWN ARE FOR MARKETING PURPOSES ONLY, ALL DIMENSIONS ARE APPROXIMATE AND NOT TO SCALE. THEY ARE SUBJECT TO ERRORS AND INACCURACIES AND NO LIABILITY WILL BE ACCEPTED. INTERESTED PARTIES SHOULD MAKE THEIR OWN INQUIRES.